

# SPECTRE®

## Performance

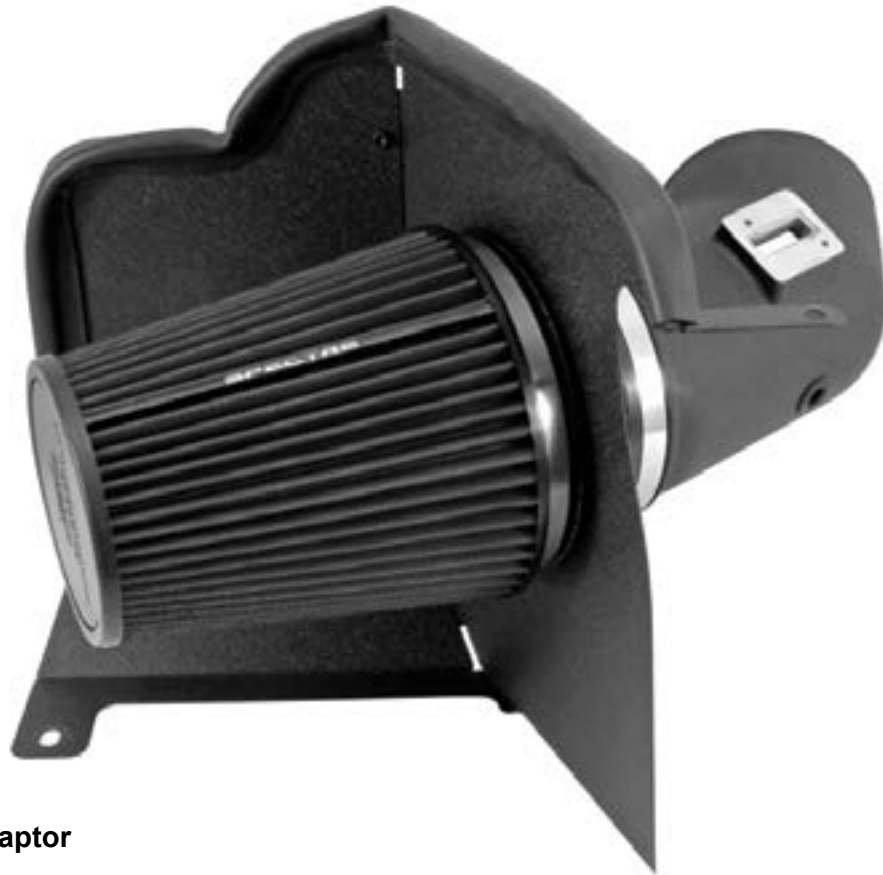
### Intake Installation Instructions

P/N 9982 (red filter) - P/N 9982B (blue filter)  
P/N 9982K (black filter)

#### Year/Make/Model/Engine

2007-2010 GM Sierra/Silverado 2500HD/3500HD  
V8-6.6L Duramax LMM (td)

PARTS FOR VEHICLES LISTED ARE 50 STATE LEGAL.  
SEE SPECTREPERFORMANCE.COM FOR CARB  
STATUS ON EACH PART FOR A SPECIFIC VEHICLE.



#### Parts List

- 1 - Air intake tube
- 1 - Air filter
- 1 - 5" Velocity stack adaptor
- 2 - 5" Hose clamps
- 1 - 6" Hose clamp
- 1 - 5" Coupler
- 1 - Heat Shield, Pc1
- 1 - Heat Shield, Pc2
- 1 - Rubber seal
- 2 - M4 Machine screws
- 1 - Grommet
- 3 - Allen bolts
- 3 - Flat washers
- 3 - Locknuts
- 2- MAFS spacers
- 1- C.A.R.B. sticker

#### Tools Required:

- 5/16" or 8mm nut driver
- Ratchet
- 10mm socket
- 13mm wrench
- T-20 Torx bit
- Phillips screwdriver

For filter reorders ask at the  
special order counter of your  
local parts store or call:  
1-909-673-9800

ask for: P/N HPR0891 (red filter)  
P/N HPR0891B (blue filter)  
P/N HPR0891K (black filter)



### Step 1

**Safety first! Before you begin the installation, make sure that the vehicle is in park (or neutral for a manual transmission) with the parking brake set. Disconnect the negative battery terminal and verify that all components that are listed are present. Note: This kit was designed and tested on a stock engine without any custom tuning done to the engine computer. Removing the battery cable may erase the programmed radio stations. The anti-theft code will need to be entered into some radios after the battery cable is connected. The anti-theft code can typically be found in the owner's manual or at your local dealership.**

---



### Step 2

**Disconnect the Mass Air Flow Sensor (MAFS) electrical connector.**



### Step 3

**Using a 5/16" nut driver (or flat blade screwdriver), loosen the clamp where the intake tube connects to the airbox.**



### Step 4

**Lift the stock air box assembly up and out of the engine bay assembly by pulling up and out firmly making sure to leave the stock intake tube in the vehicle.**

---



### Step 5

**Remove the four bolts (shown) and remove the factory air box tray from the vehicle.**



### Step 6

**Remove the MAFS and the air filter minder.**



### Step 7

Install the grommet in the intake tube then the air filter minder. Install the MAFS into the new intake tube making sure to use the MAFS spacers between the sensor and the MAFS pad. Install the coupler onto the intake tube and fasten it securely to the tube. Make sure that the clamp for the velocity stack adaptor is installed but left loose at this time.



### Step 8

Assemble the heat shield with the tabs placed on the outside of heat shield. Install bulb seal around edges of heat shield as shown.



### Step 9

Remove the bolt shown. This will be re used in the next step.



### Step 10

Install the heat shield into the truck as shown by reusing two of the bolts removed in Step 5. Re install the bolt removed in Step 9 making sure to securely fasten the heatshield in place.



### Step 11

Install the intake tube into the vehicle. Once the tube is roughly in place, install the velocity stack adaptor through the heatshield and onto the coupler. Once the tube is in desired location securely fasten the tube in place.



### Step 12

Unclip the factory wiring harness allowing the harness to reconnect to the MAFS.



### Step 13

Reconnect MAFS wiring harness.



#### Step 14

Install the supplied air filter and clamp and tighten the clamp that secures the air filter.



#### Step 15

Reconnect the battery cable, start the vehicle and let it warm up. Shut off and inspect the installation once more for any loose clamps, wires, or hardware. Test drive & enjoy! Your installation is now complete. Periodically check all clamps and brackets.

#### Step 16

The C.A.R.B. exemption sticker, (attached), must be visible under the hood, so the emissions inspector can see it when the vehicle is required to be tested for emissions. California requires testing every two years, other states may vary.

#### Step 17

**NOTE:** Most General Motors vehicles have the Vehicle Emissions Certification Information (VECI) label affixed to the air filter box. In order to be compliant with California emissions laws, the label **MUST** remain in the engine compartment. If the Vehicle Emission Control Information label is removed during modification, a new replacement label must be obtained and installed in a readily visible position in the engine compartment. The label shall not be affixed to any equipment which is easily detached from the vehicle. We recommend that the label is affixed to the underside of the hood adjacent to the hood latch. The label is Vehicle Identification Number dependent and can be ordered from the vehicle dealership. In order to receive the proper decal please bring your VIN with you. Failure to have the VECI under the hood may result in failure of a pre-registration smog test.

If you need any assistance please call 1-800-858-3333 to speak with a representative in our Customer Service Center before returning the product.

**WARNING** This product can expose you to a chemical or chemicals known to the State of California to cause cancer and birth defects or other reproductive harm.

**PARTS FOR VEHICLES LISTED ARE 50 STATE LEGAL.  
SEE SPECTREPERFORMANCE.COM FOR CARB  
STATUS ON EACH PART FOR A SPECIFIC VEHICLE.**

**SPECTRE**  
*Performance*

(909) 673-9800

[www.spectreperformance.com](http://www.spectreperformance.com)

© 2016 SPECTRE PERFORMANCE Made in China

176005B  
8/9/2016