

SPEED BY SPECTRE™

The 400mph Company™

Intake Installation Instructions P/N 99061

Year/Make/Model/Engine
2005-2006 Pontiac GTO 5.7L/6.0L

Parts List

- 1 - Lower Ram Air Tube
- 1 - Ram Air Funnel
- 1 - 4" Duct Mount
- 1 - 4" Couplers
- 4 - M6 - 1.0 x 15mm Hex Bolts
- 4 - M6 Lock Nut
- 4 - M6 Flat Washer
- 1 - Coolant Tank
- 1 - 0-20mm Clamp

Tools Required:

- 7mm Nut Driver
- Flat Blade Screwdriver
- 5/16" or 8mm Nut Driver
- T25 Torx Screw Driver
- 3/8" Open End wrench
- 3/8" Drive Ratchet
- 1/8" Allen Key
- 3/8" Socket
- Drill
- 4" hole saw

CARB Exempt-No
Products that are not CARB
exempt are legal in most
states, but may not be used in
California or states with similar
emissions control laws.



This kit is an addition to P/N 9906 so installation instructions of this kit start with P/N 9906 previously installed.

Note: The factory coolant overflow reservoir will need to be removed for the installation of this kit and replaced with the aluminum overflow tank provided.

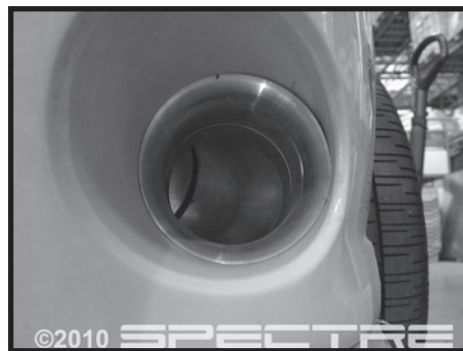
Step 1

Safety first! Before you begin the installation, make sure that the vehicle is in park with the parking brake set. Disconnect the negative battery terminal and verify all components listed are present.



Step 2

Remove the three nuts from the back of the fog light and remove fog light housing from the car.



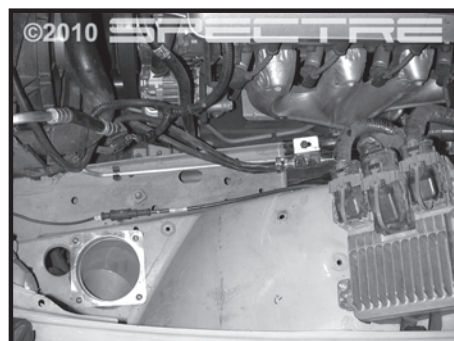
Step 3

With the fog light removed, use the 4" holesaw and drill out the back of the fog light bracket. Insert funnel in place of fog light.



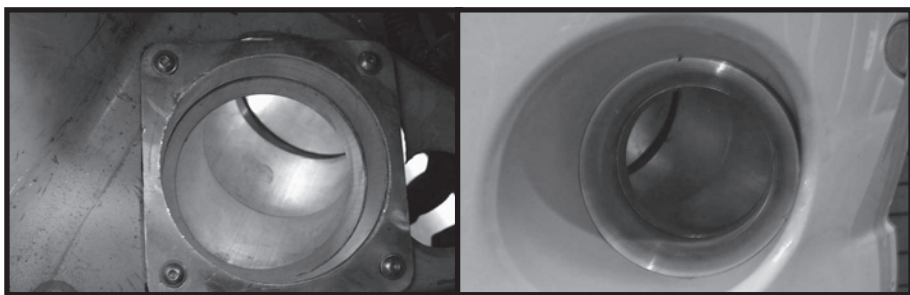
Step 4

Once the funnel is in place and lined up, temporarily install tube to see where you need to cut the top hole. Looking through the existing holes in the sheet metal, you can see enough of the tube to line up a 4" circular template (we made one from a piece of paper). You are then able to mark where you need to cut with a permanent marker and then remove the tube.



Step 5

Use 4" hole saw to cut hole in the sheet metal. Once hole is cut install duct mount and bolt into place.



TOP VIEW (from inside engine bay)

FRONT VIEW (facing front of car)

Step 6

Once funnel and duct mount are installed in place. Install rubber couplers to both ends of intake tube and bolt in between the two mounting points.

Step 7

Start vehicle and let warm up. Shut off and inspect the installation once more for any loose clamps or wires. Test drive & enjoy!

If you have any difficulties or questions regarding the installation of this intake system, contact the Spectre Performance Technical Department by email - Tech@spectreperformance.com or by phone 1-909-673-9800 Monday thru Friday 6:00am to 2:00pm PST.

SPEED BY SPECTRE.

The 400mph Company.

(909) 673-9800

www.SpeedBySpectre.com

© 2013 SPECTRE PERFORMANCE Made in China

176131
1/31/14